

## CASE STUDY

GeoVIC

Department of Primary Industries

Victoria



Jobs,  
Precincts  
and Regions

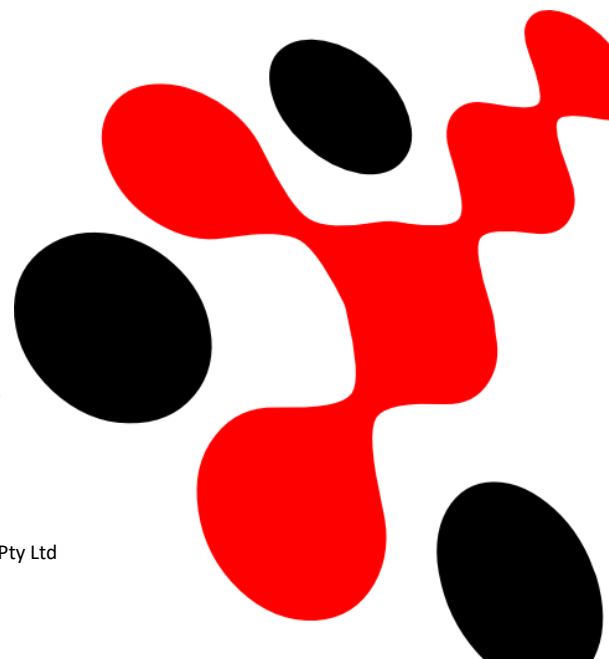
15 February 2012

Cohga Pty Ltd - Suite 405, 443 Little Collins Street, Melbourne Vic 3000 - P. 03 9036 3711

[www.cohga.com](http://www.cohga.com) - ABN 30 121 137 808

Weave, the Weave logo and the Weave icon are registered trademarks of Cohga Pty Ltd

Cohga, the Cohga logo and the "Integration made easy" slogan are registered trademarks of Cohga Pty Ltd



## GEOVIC - EXPLORE VICTORIA ONLINE

|                    |                                                                                                                                                                                                                                                                                                                                                           |
|--------------------|-----------------------------------------------------------------------------------------------------------------------------------------------------------------------------------------------------------------------------------------------------------------------------------------------------------------------------------------------------------|
| <b>System Name</b> | GeoVic 3                                                                                                                                                                                                                                                                                                                                                  |
| <b>Public URL</b>  | <a href="https://earthresources.vic.gov.au/?utm_source=dpi-vic-gov-au&amp;utm_medium=vanity-url-301ssredirect&amp;utm_content=earth-resources&amp;utm_campaign=earth-resources">https://earthresources.vic.gov.au/?utm_source=dpi-vic-gov-au&amp;utm_medium=vanity-url-301ssredirect&amp;utm_content=earth-resources&amp;utm_campaign=earth-resources</a> |
| <b>Referee</b>     | Upon Request                                                                                                                                                                                                                                                                                                                                              |

Cohga successfully worked on three phases of the Gold Undercover Discovery (GUIDE7) Project for DPI Victoria Earth Resources Division (ERD). The project work involved detailed evaluation, assistance with functional requirements, the supply and configuration of Weave, and significant turn-key customisation and development of Weave to enable a Delivery Channel for DPI users and customers. This project was 'inherited' by Cohga late in its project timetable. Cohga applied significant resources and effort to enable DPI to keep their original timeline and also reduce the cost of the original project

The **Earth Resources Division (ERD)** web mapping application now known as GeoVic 3 allows users to search their geospatial databases and display the results as maps or tables. Datasets that can be viewed and interrogated include mineral, petroleum and extractive industries tenements, land-use and airborne geophysical survey boundaries, gravity, magnetic and radiometric images, borehole & well data, surface geochemistry results, mines and mineral occurrences, and geological maps and interpretations at various scales.

This application provides their clients with on-line access to ERD services and databases to help them carry out their business.

The map service is based on the licenced use of Weave technology as developed by Cohga for the Department of Primary Industries Victoria.

GeoVic 3 as the project became known was a significant development project as part of the Gold Undercover initiative by DPI Victoria, and delivers the following capabilities:

- A new Search and Delivery Channel, hosted within the MPD website.
- An interactive data exploration tool, as part of the Search and Delivery Channel, facilitating analysis and discovery of spatial data throughout Victoria.
- Integration with an existing Online Store.(eFirst).

The Search and Delivery Channel integrates with the spatial and aspatial data stores, with integrated links to legacy databases and an existing document repository. This provides users with a rich search capability, customised to suit the appropriate dataset being accessed.

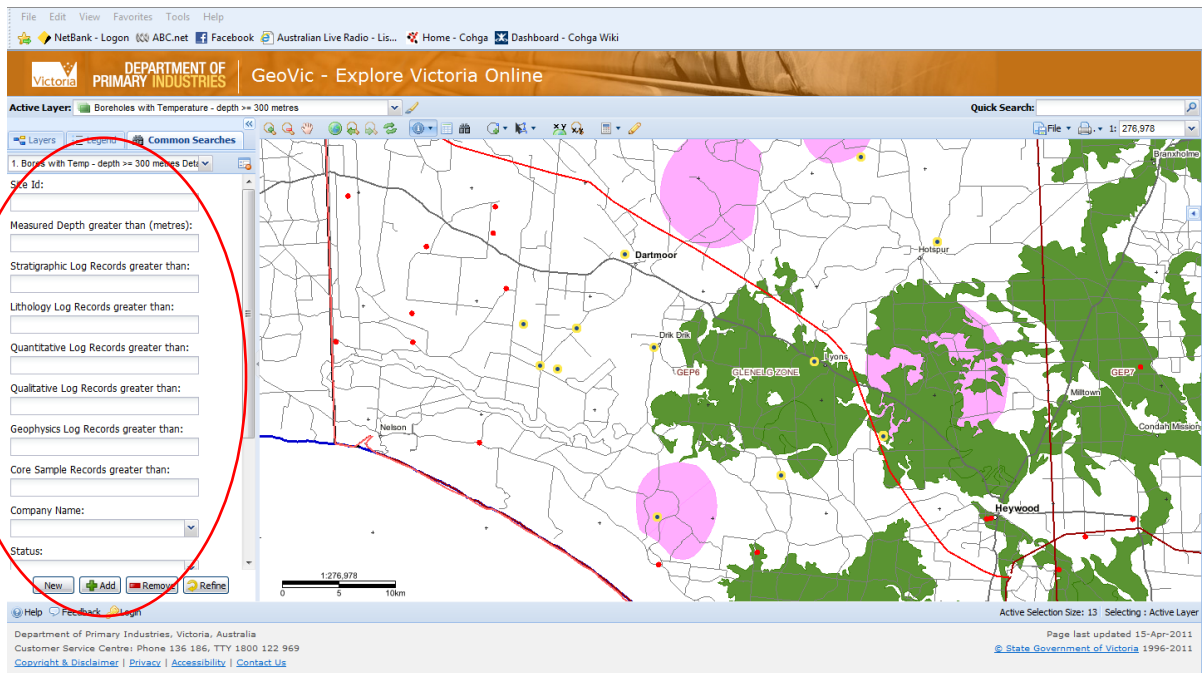
Search is complemented by a delivery capability; that allows users to extract data from the full range of DPI's data resources through a variety of web services for analysis and processing.

The capacity for business to discover, search and receive delivery of quality information in a timely manner on-line, helps achieve DPI's goal of attracting investment by providing a content rich set of gold prospectivity resources across multiple technology platforms.

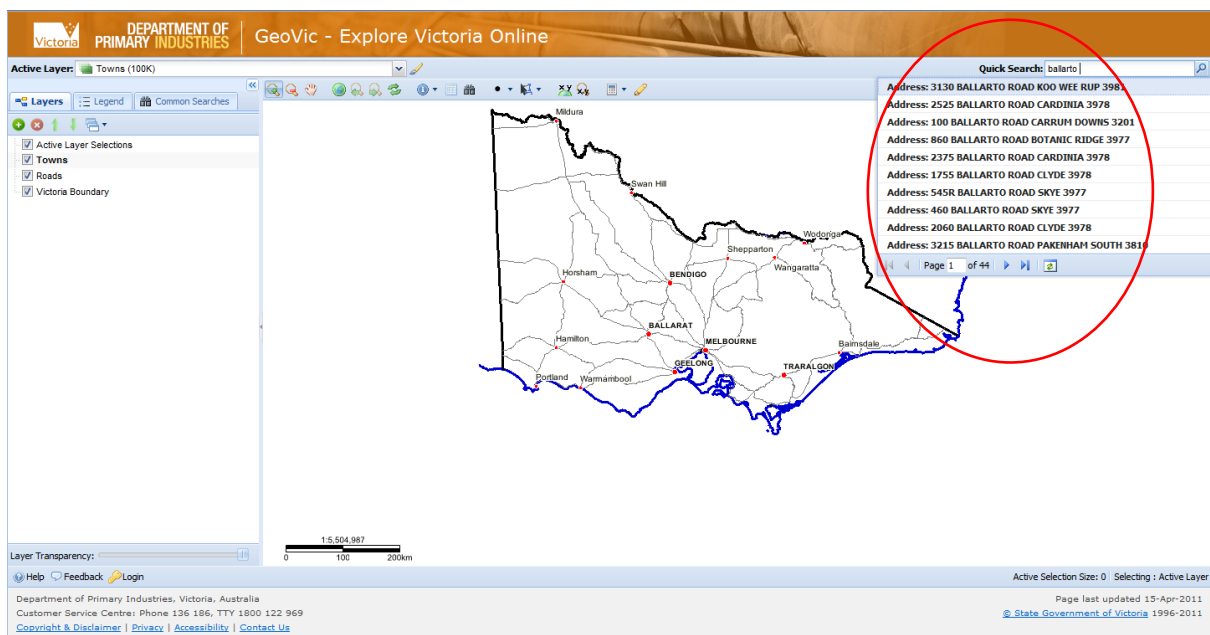
The Search and Delivery Channel has been deployed on the internet and is available to both internal and external users. Initial deployment of the system included a full implementation of all applications and connection to an agreed number of data sources.

The elements of the channel are as follows:

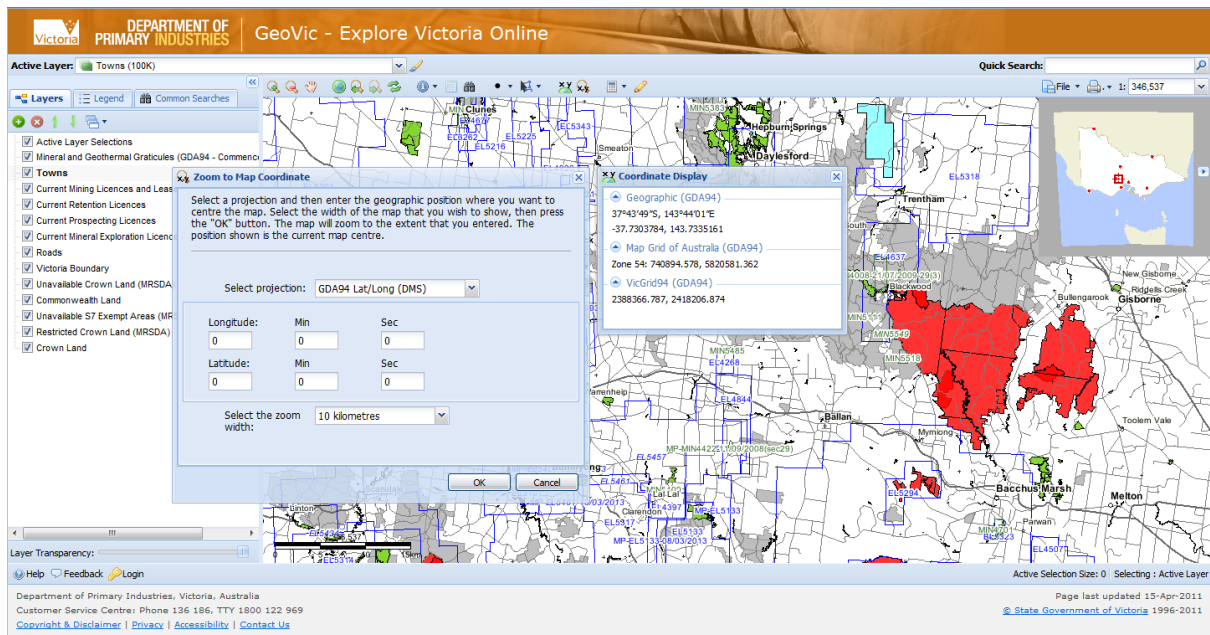
- *Discovery* – the ability for MPD to make itself, its web presence, and the services offered via this web presence known
- *Search* – designating a web based interface allowing users to enter a range of search parameters (spatial and aspatial) and find data of varying types, and from multiple repositories, which satisfy the input search criteria. Search is a means for external users to gain access to MPD data, as well as a business tool for internal users working with data and internally hosted files.
- *Interactive Data Exploration* – allowing users to define their area of interest, select a series of data layers, display features on a map and query data attributes. The dataset types are broad and include geology, boreholes, 3D models, geochemistry, reports, etc. The search is also able to be applied jointly across spatial and aspatial databases and return attributes from both data sets.
- *Delivery* – enabling users to view or obtain data or information content that is relevant to their search results. It includes the ability to merge data from disparate data sources to produce custom datasets that may be delivered to a user in a number of different formats and channels. Delivery includes compression and packaging of data as appropriate.
- Appropriate system administration and user registration capabilities exist within the channel.
- *Extensibility* – The system can be extended to cater for additional data sources, queries, reports, web services and metadata catalogues. This extensibility can be applied to both internal and external resources.



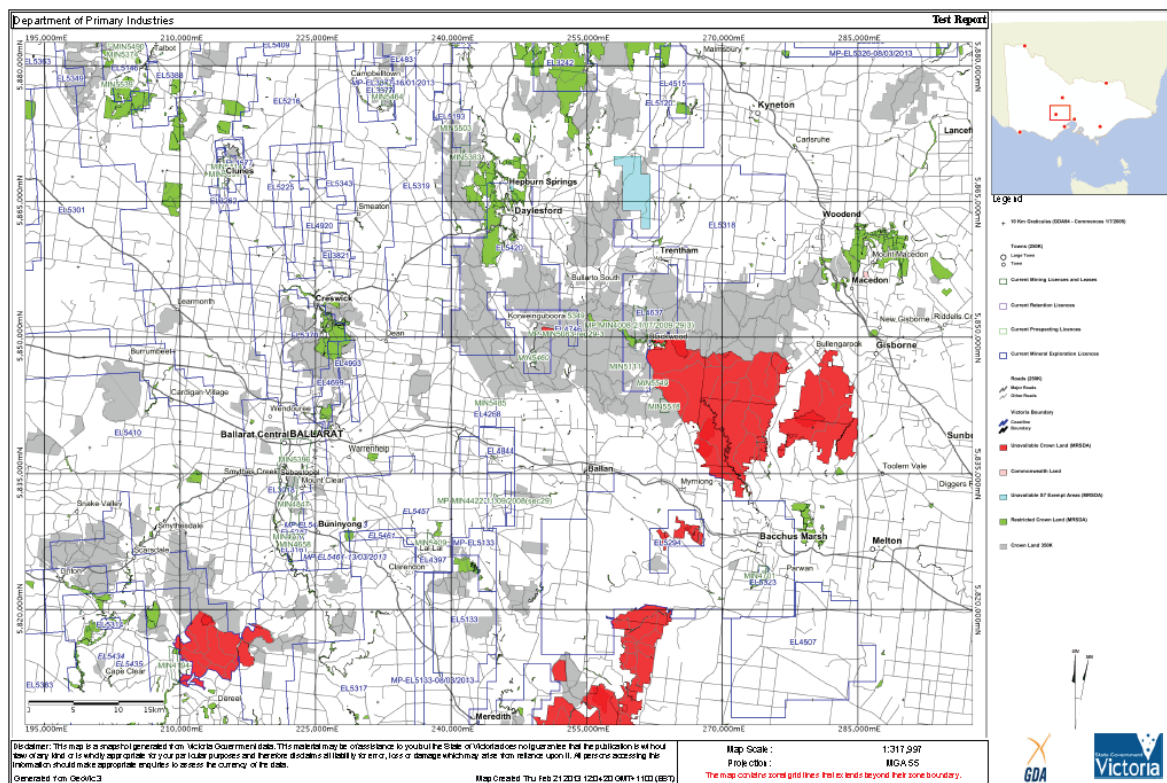
Different Advanced Search Dialogue for Different Data Sets (Query by Forms)



Predictive Search Capability with Free Text Entry



Example of Coordinate Entry and Display



Example PDF Report