

What is Weave?

Weave is a systems integration and Information delivery framework for rapidly combining disparate information systems in an easy to use environment. Weave provides a very powerful set of tools for integrating corporate information systems, and for viewing, searching, editing, and reporting across these systems from the desktop without users needing to know the integrated systems.

Weave allows corporate information to be easily shared and disseminated across the web and Weave's strong web mapping capabilities allows information to be viewed and analysed in a spatial context.

Weave is a client-server technology based on the Java platform so it can be installed on a variety of hardware and operating systems such as Windows, Linux and Unix. Weave presents information through all common web browsers without plugins.

Weave server can be deployed on premise, in the cloud, or as a hybrid of these. Weave clients are designed to be responsive and are available on all modern mobile devices connected to a network.

Weave comes with a powerful REST API that allows users to create their own Weave clients using their preferred development technologies and resources. The API also allows clients to embed Weave clients or components of Weave clients into their existing enterprise solutions.

Core Components of Weave

1. Systems Integration Framework;
2. Information Delivery Framework;
3. HTML 5 Browser Client;
4. Sophisticated Reporting Capability;
5. Application Programming Interface.

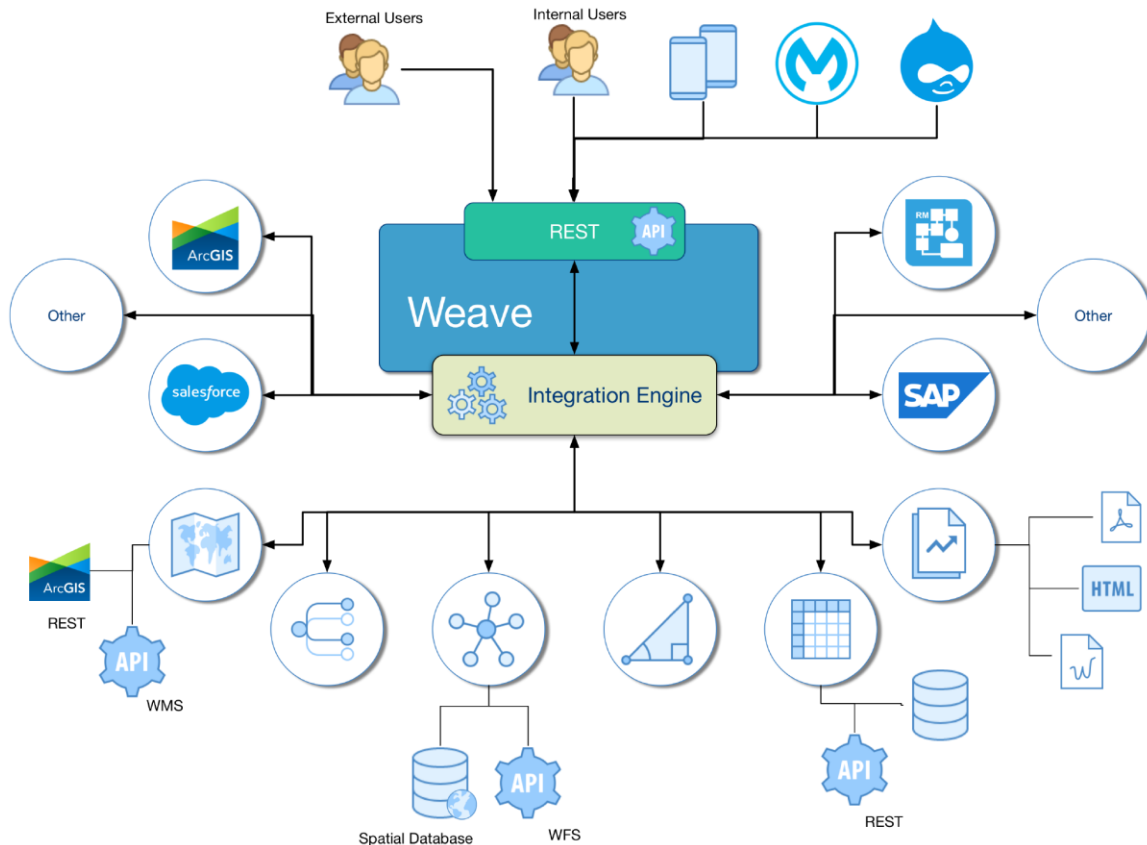
Systems Integration Framework

Weave provides integration capabilities at both the server side and at the internal application (browser) level.

Server-Side Integration

The Weave Integration Engine is an open source Java framework that focuses on making integration easier and more accessible to developers. It does this by providing:

- concrete implementations of all the widely used Enterprise Integration Patterns (EIPs);
- connectivity to a great variety of transports and APIs;
- easy to use Domain Specific Languages (DSLs) to wire EIPs and transports together.



Weave Integration Engine enables the integration of enterprise systems such as Property Management Systems, Document Management Systems, Asset Management Systems, Finance Systems, Geographic Information Systems and many others. Geographic Information Systems (GIS) provides the spatially enabling path for these systems and most of the time it is the main integration the Weave user will work with.

Weave can integrate data sources of all types including Oracle and Oracle Spatial, SQL Server and SQL Server Spatial, DB2, ArcSDE, Shapefiles, FileGDB, PostgreSQL and PostGIS, WFS, GML, MapInfo, S3, Files, REST Services, FTP, IMAp, Message Services, Salesforce, SAP, Twitter, Facebook and many others.

Weave is also able to simultaneously integrate the representation of spatial data from open standard map services and from proprietary services such as ArcIMS, ArcGIS Server, AutoCAD Map, MapXtreme, Geoserver, QGISServer, MapServer and others.

The Weave Integration Engine makes it easier and more productive for sites to integrate different products with Weave or without Weave. It also provides the ability to solve harder and more complex integration issues quickly and easily without having to write dedicated code.

Client-Side Integration

Weave also has a number of Custom Integration modules to provide two-way integration with common enterprise systems such as Hansen, Technology One, SAP, Assetmaster, Authority, Confirm, Proclaim, Pathway, OpenOffice, and Trim.

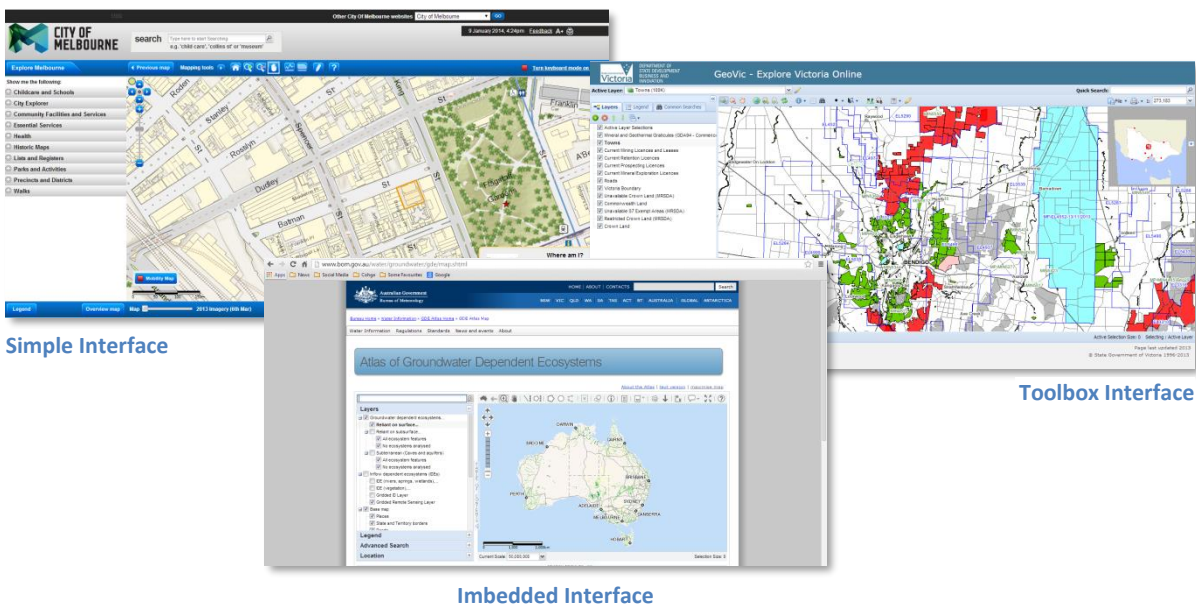
Weave's client-side integration provides users with the ability to exchange information and access enterprise systems directly from the Weave client, and vice versa.

Information Delivery Framework

Weave provides a powerful information delivery framework, or toolbox, that allows enterprise information to be presented and reported on, in a spatial and a-spatial context. Weave provides the tools for developing web sites that conform to an organisation's presentation standards without being locked into a pre-defined application interface – see examples below. The Weave framework includes a wealth of spatial and textual query tools to easily search and report across multiple enterprise information sources.

Weave has a strong security capability that allows clients to control access to Weave functionality and corporate data systems. Weave can be configured to use an organisations single sign on and can be linked to an organisation's LDAP.

Weave provides an easy to use browser based administration tool for the management and configuration of Weave clients and servers. This tool simplifies the administration effort and improves system quality through consistent management practices.



HTML 5 Browser Client

The Weave client does not require installation on the client desktop. It is a lightweight HTML 5 and JavaScript browser client that does not need vendor specific plugins to be installed and also avoids the need for 'popups' to be enabled.

There is no limit on the number of clients that a site can create. Each configured client has its own URL and login credentials (if required) so as to control access to client features, reports, data, mapping and spatial engines. For example, a simple mapping application could be hosted via anonymous access; and a protected site which is only accessible via a login, can be enabled for more sensitive data using the same Weave server instance. The same instance of Weave server will also handle multiple internal clients with each referencing different Mapping Engines and containing only data intended to be seen by internal staff.

Mobile Weave clients are available for use on tablets and smart phones.

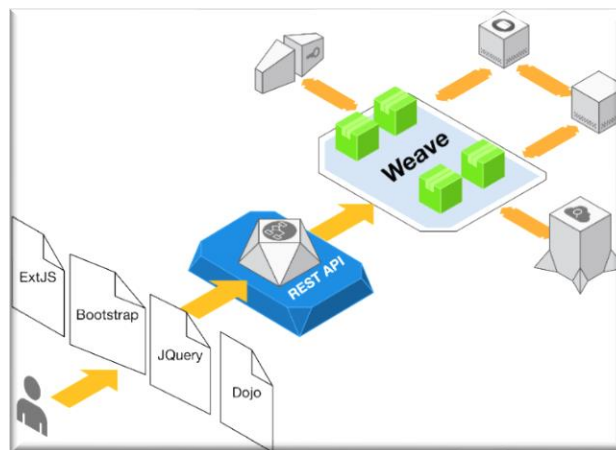
Sophisticated Reporting

Weave uses a powerful business intelligence (BI) reporting module that allows the rapid creation of high quality reports, including maps and associated data to be output in a range of standard formats. The system's sophisticated reporting capabilities allow reports with data from multiple sources such as databases and web services. The reports may contain lists, charts, tables, crosstabs, maps, images and more.

Compound reports such as multiple reports consolidated into a single document are also supported. This facilitates the mass production of output to address multiple recipients with one click of the mouse.

Application Programming Interface (API)

Weave's powerful REST API allows clients to create their own Weave clients using their preferred development technologies such as Bootstrap, Dojo, JQuery, etc. The API also allows clients to imbed Weave clients or components of Weave clients into their existing enterprise solutions such as Drupal, SharePoint, Maximo, etc.



With Weave server doing the “heavy lifting” of systems integration, and the Weave API providing a standard and easy to use pathway between client and server, an organisation can maximise their return on investment in their existing technologies and resources.

Cohga Pty Ltd

Cohga is an Australian company with a focus on the development of IT products and the provision of associated professional services.

Our philosophy is to use Open, State of the Art and vendor-independent technology to create products and solutions that exceed client expectations. Being independent of any specific software vendor or product, the Cohga team can advise you which solution will best enhance and promote your business. We continuously monitor the market for the emergence of new technologies in order to offer our customers the best possible choices.

Cohga will help your organisation take advantage of the capabilities of modern software. Our team is experienced in the development of IT solutions, from the establishment of system requirements through to testing and commissioning as well as post-implementation support.

Contact us for more information at info@cohga.com and visit our website at <http://www.cohga.com>